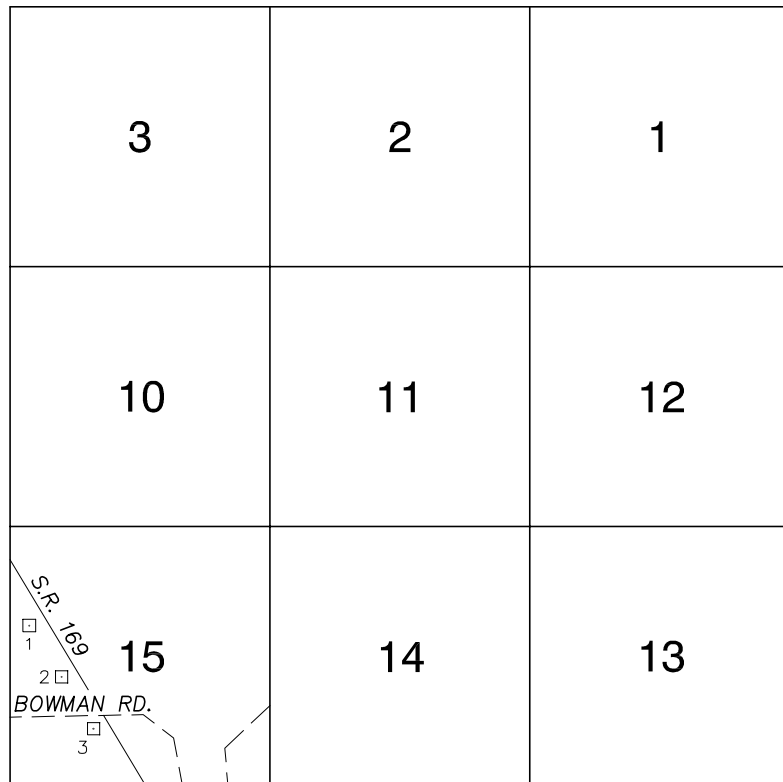


Township 15 South, Range 67 East Northeast Quarter



NORTH AMERICAN VERTICAL
DATUM OF 1988
- ALL ELEVATIONS IN METERS -

No.	STATION	ELEVATION (METERS)	F N D	DESCRIPTION
1	3C57 15NWW6	439.695	F N D	2" BRASS CAP IN A CONCRETE MONUMENT, WEST SIDE OF S.R. 169, 110' NORTH OF MILE MARKER 21, 10' WEST OF A CHAMBER OF COMMERCE SIGN.
2	3C57 15W6	437.653	F N D	RIVET AND SQUARE ALUMINUM PLATE, IN A CONCRETE HEADWALL OF A 10' CORRUGATED METAL PIPE OF A LARGE IRRIGATION DITCH, WEST SIDE OF S.R. 169 AND 0.2 MILES NORTH OF BOWMAN RD.
3	3C57 15SW6	433.343	F N D	RIVET AND SQUARE ALUMINUM PLATE IN THE NORTH EDGE OF A CONCRETE LINED IRRIGATION DITCH, SOUTHWEST CORNER OF S.R. 169 AND BOWMAN RD.
4				
5				
6				
7				
8				
9				
10				
11				

CLARK COUNTY VERTICAL CONTROL v.2003

CLARK COUNTY SURVEYOR'S OFFICE
5051 SOUTH PARADISE ROAD
LAS VEGAS, NEVADA 89119
(702) 455-0640

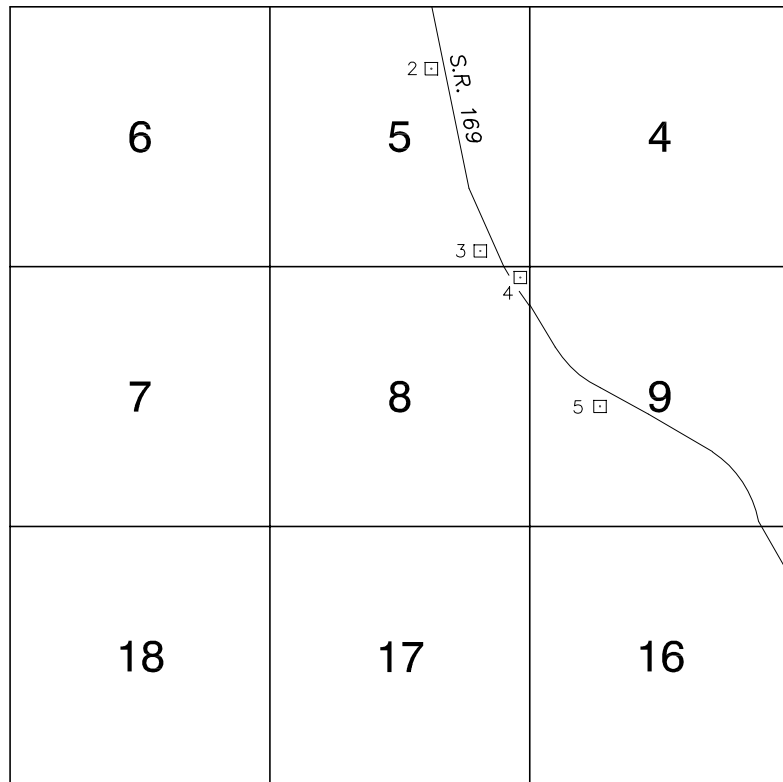
CONVERSION FACTOR:
METERS X $\left(\frac{3937}{1200}\right)$ = U.S. SURVEY FEET

REVISED 2003

SHEET
1 of 1

**15-67
NE**

Township 15 South, Range 67 East Northwest Quarter



NORTH AMERICAN VERTICAL
DATUM OF 1988
- ALL ELEVATIONS IN METERS -

No.	STATION	ELEVATION (METERS)		DESCRIPTION
1				LOST 2003
2	3C57 5N6	528.824	F N D	RIVET AND SQUARE ALUMINUM PLATE, IN A CONCRETE HEADWALL OF A PAIR OF 3' DIAMETER CORRUGATED METAL PIPES, WEST SIDE OF S.R. 169, 0.5 MILES SOUTH OF I-15.
3	3C57 5SES	502.291	F N D	RIVET AND SQUARE ALUMINUM PLATE, IN CONCRETE HEADWALL OF 4' DIAMETER CORRUGATED METAL PIPE, 280' SOUTH OF MILE MARKER 23, ON WEST SIDE OF S.R. 169 (12' BELOW STREET GRADE), 1.2 MI. SOUTH OF I-15.
4	3C57 8NES	494.043	F N D	RIVET AND SQUARE ALUMINUM PLATE, IN A CONCRETE HEADWALL OF A PAIR OF 4' DIAMETER CORRUGATED METAL PIPES, ON THE NORTHEAST SIDE OF S.R. 169, 1.4 MILES SOUTH OF I-15.
5	3C57 9W6	492.110	F N D	2" BRASS CAP, IN A CONCRETE MONUMENT, SOUTHWEST SIDE OF S.R. 169, 10' SOUTHWEST OF MILE MARKER 22, 2.2 MILES SOUTH OF I-15, 500' SOUTH OF THE LAST SUMMIT LEADING INTO MOAPA VALLEY.
6				
7				
8				
9				
10				
11				

CLARK COUNTY VERTICAL CONTROL v.2003

CLARK COUNTY SURVEYOR'S OFFICE
5051 SOUTH PARADISE ROAD
LAS VEGAS, NEVADA 89119
(702) 455-0640

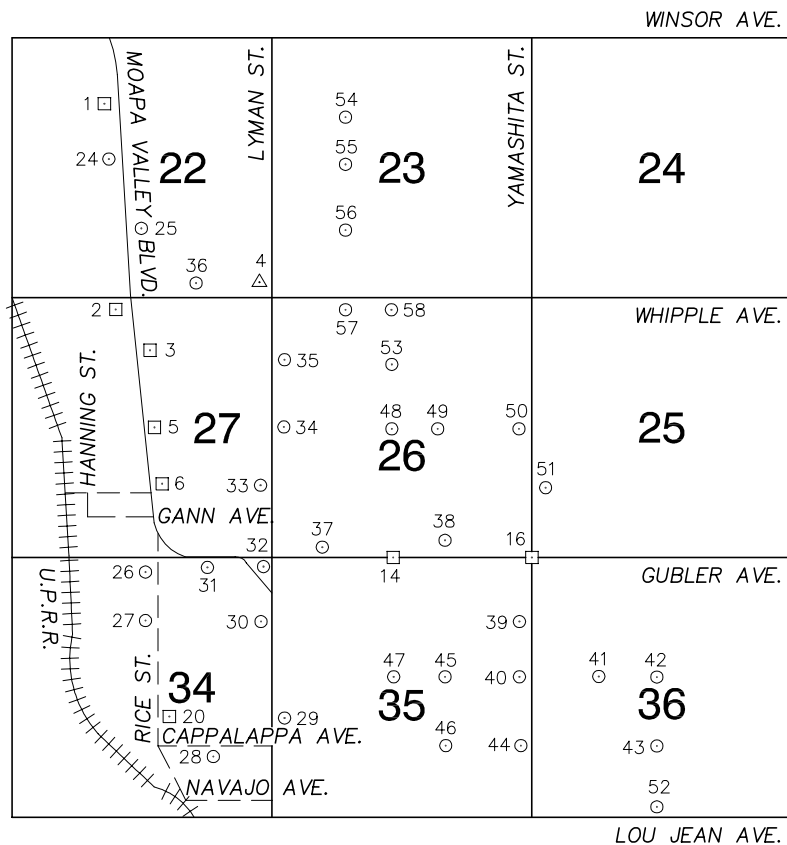
CONVERSION FACTOR:
METERS X $\left(\frac{3937}{1200}\right)$ = U.S. SURVEY FEET

REVISED 2003

SHEET
1 of 1

15-67
NW

Township 15 South, Range 67 East Southeast Quarter



NORTH AMERICAN VERTICAL
DATUM OF 1988
- ALL ELEVATIONS IN METERS -

No.	STATION	ELEVATION (METERS)		DESCRIPTION
1	3C57 22C4	428.641	F N D	RIVET AND SQUARE ALUMINUM PLATE, IN SOUTHEAST CORNER OF A 8' X 8' CONCRETE IRRIGATION HEADGATE BOX, NORTHWEST CORNER OF MOAPA VALLEY BLVD. AND WELLS AVE.
2	3C57 27N4	423.982	F N D	RIVET AND SQUARE ALUMINUM PLATE IN THE SOUTHWEST CORNER OF A 3' X 3' CONCRETE FIRE HYDRANT BASE, SOUTHWEST CORNER OF MOAPA VALLEY BLVD. AND WHIPPLE AVE. (FIRE HYDRANT NOT LOCATED IN BASE)
3	3C57 27N6	422.624	F N D	RIVET AND SQUARE ALUMINUM PLATE, 4' SOUTH OF THE NORTH END OF A JERSEY RAIL, NORTHEAST CORNER OF MOAPA VALLEY BLVD. AND THE BRIDGE CROSSING THE MUDDY RIVER 17', NORTHWEST OF POWER POLE # (Lg D30)
4	V 20 USBR	430.645	F N D	3 3/4" BUREAU OF RECLAMATION BRASS CAP IN CONCRETE, STAMPED "V-20", NORTHWEST OF WHIPPLE AVE. AND LYMAN ST., 113' NORTH OF A POWER POLE, # (Lg D AØ BØ CØ.)
5	3C57 27C4	420.685	F N D	ALUMINUM MONUMENT IN CONCRETE, STAMPED "C 1/4 SEC 27 4320", 33' EAST OF CENTERLINE OF MOAPA VALLEY BLVD. AND 275' NORTH OF NORTH WALL OF LOGANDALE WARD CHURCH IN A PARKING LOT.
6	3C57 27S6	419.119	F N D	4" ALUMINUM MONUMENT IN DIRT, STAMPED "S 1/16 C-C SEC 27 2050", AT CENTERLINE OF LISTON AVE., 20.7' EAST OF MOAPA VALLEY BLVD., AND 22' WEST OF CENTERLINE OF A 6" BLOCK WALL.
7				LOST 2003
8				LOST 2003
9				LOST 2003
10				LOST 2003
11				LOST 2003

CLARK COUNTY VERTICAL CONTROL v.2003

CLARK COUNTY SURVEYOR'S OFFICE
5051 SOUTH PARADISE ROAD
LAS VEGAS, NEVADA 89119
(702) 455-0640

CONVERSION FACTOR:
METERS X $\left(\frac{3937}{1200}\right)$ = U.S. SURVEY FEET

REVISED 2003

SHEET
1 OF 3

15-67
SE

No.	STATION	ELEVATION (METERS)	DESCRIPTION	No.	STATION	ELEVATION (METERS)	DESCRIPTION
12			LOST 1992	25	0C57 22S6 2000	424.118	S E T RIVET AND ROUND ALUMINUM PLATE IN A CONCRETE ENCASED PIPE, SOUTHEAST CORNER OF MOAPA VALLEY BLVD. AND MARSHALL AVE.
13			LOST 2003	26	0C57 34N4 2000	417.363	S E T RIVET AND ROUND ALUMINUM PLATE IN A GRATE, OVER AN IRRIGATION DITCH, AT THE SOUTHWEST CORNER OF RICE ST. AND GUBLER AVE.
14	3C57 26S4	419.552	F N D 4" ALUMINUM MONUMENT, IN CONCRETE, STAMPED 1/4 26/35 RLS 2050, LOCATED AT THE INTERSECTION OF GUBLER AVE. AND HEYER ST.	27	0C57 34N6 2000	415.849	S E T RIVET AND ROUND ALUMINUM PLATE IN A CONCRETE RAMP OVER AN IRRIGATION DITCH ON THE WEST SIDE OF RICE ST., 170' NORTH OF BROTHERS AVE.
15			LOST 2003	28	0C57 34SE6 2000	411.892	S E T RIVET AND ROUND ALUMINUM PLATE IN A CONCRETE RAMP OVER AN IRRIGATION DITCH, SOUTHWEST CORNER OF CAPPALAPPA AVE. AND PAIUTE ST.
16	3C57 25SWS	431.342	F N D 4" ALUMINUM MONUMENT LOCATED AT GUBLER AVE. AND YAMASHITA ST. CAP IS STAMPED: $\frac{26}{35} \frac{25}{36}$ RLS 2050	29	0C57 35SWW6 2000	410.999	S E T RIVET AND ROUND ALUMINUM PLATE IN NOSE OF ISLAND, ON LAKE VALLEY DR. EAST OF MOAPA VALLEY BLVD.
17			LOST 1992	30	0C57 34NEE6 2000	413.374	S E T RIVET AND ROUND ALUMINUM PLATE IN A CONCRETE HEADWALL OF AN IRRIGATION DITCH, 40' WEST OF MOAPA VALLEY BLVD. AND 7' SOUTH OF THE NORTH FENCE LINE OF 2685 MOAPA VALLEY BLVD.
18			LOST 2003	31	0C57 34NNE6 2000	415.728	S E T RIVET AND ROUND ALUMINUM PLATE IN A CONCRETE RAMP OVER AN IRRIGATION DITCH, SOUTH SIDE OF MOAPA VALLEY BLVD. AT THE EAST ENTRANCE TO 2895 MOAPA VALLEY BLVD.
19			LOST 2003	32	0C57 34NES 2000	414.590	S E T RIVET AND ROUND ALUMINUM PLATE IN A CONCRETE MONUMENT, SOUTH SIDE OF GUBLER AVE., 25' WEST OF LYMAN ST.
20	3C57 34S6	413.094	F N D 2" BRASS CAP IN CONCRETE, STAMPED MV 10, 0.1 MILES SOUTH OF C 1/4 SEC. 34, 17.5 EAST OF RICE ST. AND THE CENTERLINE OF QUAIL HOLLOW AVE.	33	0C57 27SEE6 2000	416.623	S E T RIVET AND ROUND ALUMINUM PLATE IN A CONCRETE RAMP OVER AN IRRIGATION DITCH, WEST SIDE OF LYMAN ST., 55' SOUTH OF THE ENTRANCE TO THE MOAPA VALLEY VETERINARY SERVICE.
21			LOST 2003	34	0C57 26W4 2000	418.605	S E T RIVET AND ROUND ALUMINUM PLATE IN A CONCRETE MONUMENT, EAST SIDE OF LYMAN ST., NEAR THE NORTH BOUNDARY OF THE LOGANDALE CEMETERY.
22			LOST 2003	35	0C57 26NWW6 2000	426.965	S E T RIVET AND ROUND ALUMINUM PLATE IN TOP OF CURB, EAST SIDE OF LYMAN ST., 390' NORTH OF FREHNER AVE.
23			LOST 2003	CLARK COUNTY VERTICAL CONTROL v.2003			
24	0C57 22C4A 2000	425.361	S E T RIVET AND ROUND ALUMINUM PLATE IN A CONCRETE VAULT. WEST SIDE OF MOAPA VALLEY BLVD. 60' SOUTH OF JENSEN AVE. AT 4085 MOAPA VALLEY BLVD.	CLARK COUNTY SURVEYOR'S OFFICE 5051 SOUTH PARADISE ROAD LAS VEGAS, NEVADA 89119 (702) 455-0640		CONVERSION FACTOR: METERS X $\left(\frac{3937}{1200}\right)$ = U.S. SURVEY FEET	
						REVISED 2003	SHEET 2 OF 3

No.	STATION	ELEVATION (METERS)	DESCRIPTION	No.	STATION	ELEVATION (METERS)	DESCRIPTION
36	0C57 22SSE6 2000	426.224	S E T RIVET AND ROUND ALUMINUM PLATE IN A CONCRETE MONUMENT, NORTH SIDE OF WHIPPLE AVE., 55' EAST OF AN IRRIGATION DITCH, NEAR POWER POLE # (Lg D15)	49	0C57 26E6 2000	434.960	S E T RIVET AND ROUND ALUMINUM PLATE IN A CONCRETE TRANSFORMER PAD, SOUTH SIDE OF BUNNELL AVE., 340' WEST OF ST. JOSEPH ST.
37	0C57 26SSW6 2000	414.949	S E T RIVET AND ROUND ALUMINUM PLATE IN A CONCRETE TRANSFORMER PAD, 50' NORTH OF GUBLER AVE. AND 240' WEST OF MATEUSE ST.	50	0C57 26E4 2000	440.406	S E T RIVET AND ROUND ALUMINUM PLATE IN A CONCRETE WATER VAULT, WEST SIDE OF YAMASHITA ST., 120' NORTH OF BUNNELL AVE.
38	0C57 26SSE6 2000	425.692	S E T RIVET AND ROUND ALUMINUM PLATE IN A CONCRETE TRANSFORMER PAD, WEST SIDE OF ST. JOSEPH ST., 270' NORTH OF GUBLER AVE.	51	0C57 25SSW6 2000	438.071	S E T RIVET AND ROUND ALUMINUM PLATE IN A CONCRETE MONUMENT, SOUTHEAST CORNER OF YAMASHITA ST. AND LISTON AVE., NEAR AN ELECTRICAL VAULT.
39	0C57 35NEE6 2000	425.092	S E T RIVET AND ROUND ALUMINUM PLATE IN A CONCRETE MONUMENT, NORTHWEST CORNER OF YAMASHITA ST. AND CLARIDGE AVE., 0.25 MILES SOUTH OF GUBLER AVE.	52	0C57 36S4 2000	423.822	S E T RIVET AND ROUND ALUMINUM PLATE IN A CONCRETE FOOTING OF A WIRE FENCE CORNER, NORTHEAST CORNER OF LOU JEAN AVE. AND ANDERSON ST.
40	0C57 35E4 2000	419.165	S E T RIVET AND ROUND ALUMINUM PLATE IN TOP OF CURB, SOUTHWEST CORNER OF YAMASHITA ST. AND WITTWER AVE., NEAR THE PC OF YAMASHITA ST.	53	0C57 26N6 2000	438.251	S E T RIVET AND ROUND ALUMINUM PLATE IN A CONCRETE MONUMENT, NORTHEAST CORNER HEYER ST. AND FREHNER AVE. NEAR PP #(B4)
41	0C57 36W6 2000	423.640	S E T RIVET AND ROUND ALUMINUM PLATE IN A CONCRETE MONUMENT, SOUTHEAST CORNER OF WITTWER AVE. AND WHITMORE ST.	54	0C57 23NW6 2000	442.349	S E T RIVET AND ROUND ALUMINUM PLATE IN A CONCRETE MONUMENT, NORTH SIDE OF DUNN AVE., 660' EAST OF SKYLINE ST. AT 1280 DUNN ST.
42	0C57 36C4 2000	432.759	S E T RIVET AND ROUND ALUMINUM PLATE IN A CONCRETE MONUMENT, SOUTHWEST CORNER OF WITTWER AVE. AND ANDERSON ST.	55	0C57 23W6 2000	450.441	S E T RIVET AND ROUND ALUMINUM PLATE IN A CONCRETE MONUMENT, SOUTHWEST CORNER OF JENSON AVE. AND MATEUSE ST. NEAR A STREET SIGN.
43	0C57 36S6 2000	428.096	S E T RIVET AND ROUND ALUMINUM PLATE IN A CONCRETE MONUMENT, SOUTHWEST CORNER OF ANDERSON ST. AND PAUL AVE.	56	0C57 23SW6 2000	442.663	S E T RIVET AND ROUND ALUMINUM PLATE IN A CONCRETE ELECTRICAL PAD. ON THE EAST SIDE OF MATEUSE ST. 330' NORTH OF MARSHALL AVE.
44	0C57 35SEE6 2000	416.157	S E T RIVET AND ROUND ALUMINUM PLATE IN TOP OF CURB, NORTHWEST CORNER OF YAMASHITA ST. AND PAUL AVE., NEAR THE PC OF YAMASHITA ST.	57	0C57 26NNW6 2000	433.554	S E T RIVET AND ROUND ALUMINUM PLATE IN THE SIDEWALK AT THE NORTHEAST CORNER OF THE RON LEWIS FINE ARTS CENTER BLDG., CLARK COUNTY FAIRGROUNDS.
45	0C57 35E6 2000	417.248	S E T RIVET AND ROUND ALUMINUM PLATE IN TOP OF CURB, SOUTHEAST CORNER OF WITTWER AVE. AND ST. JOSEPH ST.	58	0C57 26N4 2000	443.573	S E T RIVET AND ROUND ALUMINUM PLATE IN A CONCRETE ELECTRICAL PAD, SOUTHEAST CORNER OF WHIPPLE AVE. AND HEYER ST.
46	0C57 35SE6 2000	413.482	S E T RIVET AND ROUND ALUMINUM PLATE IN TOP OF CURB, NORTHEAST CORNER OF PAUL AVE. AND ST. JOSEPH ST.	59			
47	0C57 35C4 2000	408.941	S E T RIVET AND ROUND ALUMINUM PLATE IN A CONCRETE MONUMENT, NEAR AN ELECTRICAL VAULT. EAST SIDE OF HEYER ST. NEAR THE C-1/4 SEC. 35	CLARK COUNTY VERTICAL CONTROL v.2003			
48	0C57 26C4 2000	429.508	S E T RIVET AND ROUND ALUMINUM PLATE IN TOP OF CURB, SOUTHWEST CORNER OF HEYER ST. AND BUNNELL AVE., NEAR 1/2 DELTA.	CLARK COUNTY SURVEYOR'S OFFICE 5051 SOUTH PARADISE ROAD LAS VEGAS, NEVADA 89119 (702) 455-0640			CONVERSION FACTOR: METERS X $\left(\frac{3937}{1200}\right)$ = U.S. SURVEY FEET
				REVISED 2003		SHEET 3 OF 3	15-67 SE